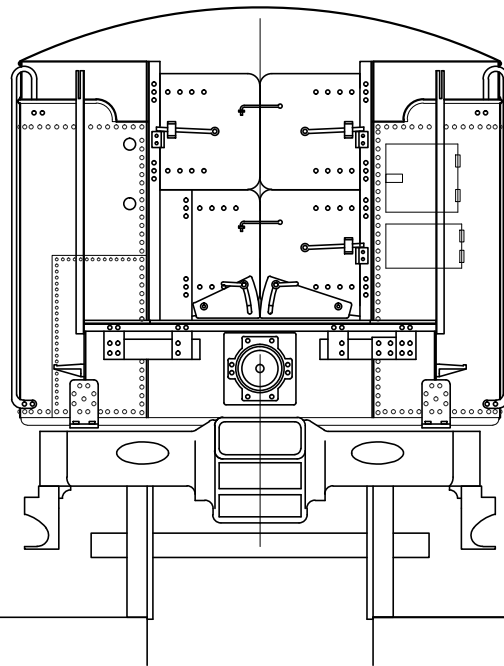
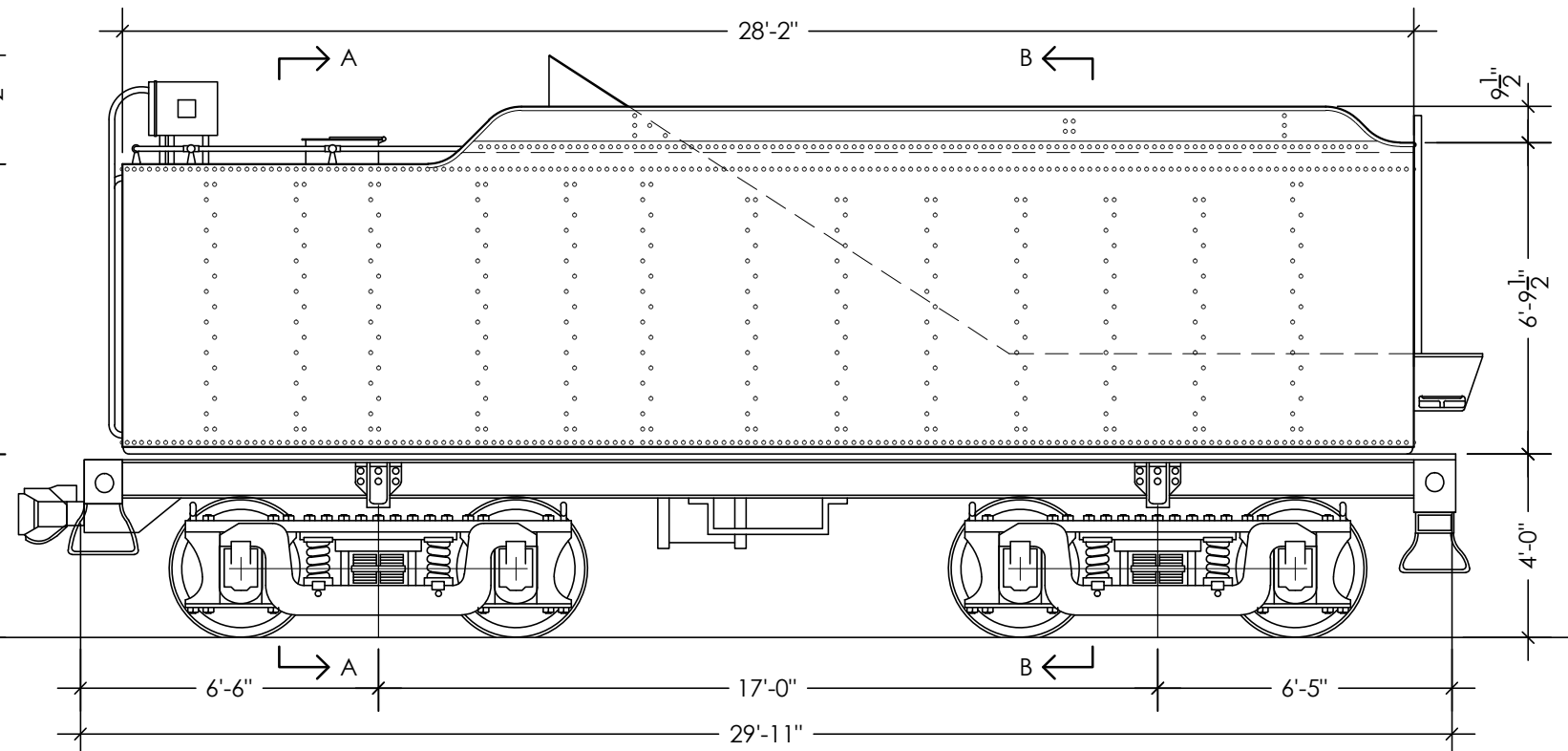
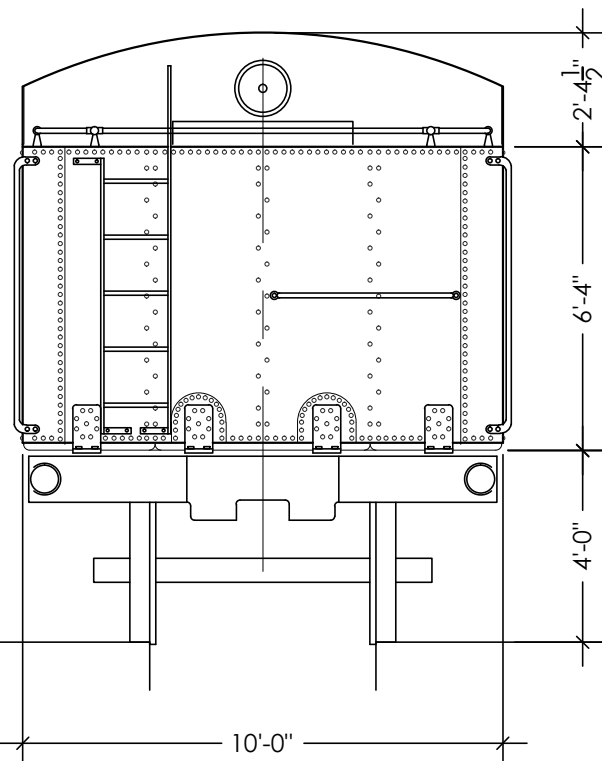
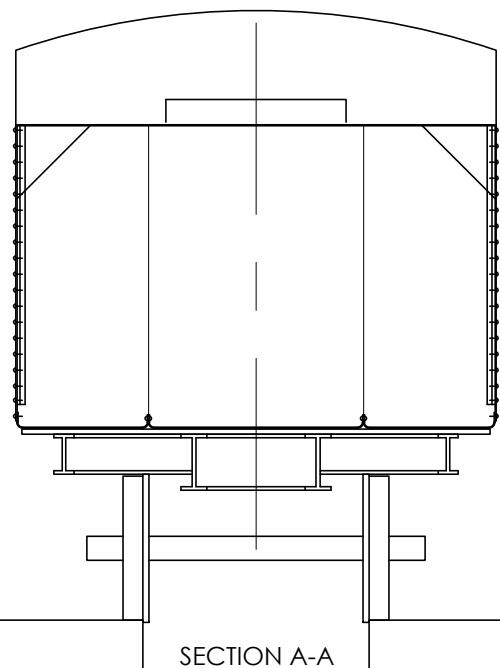
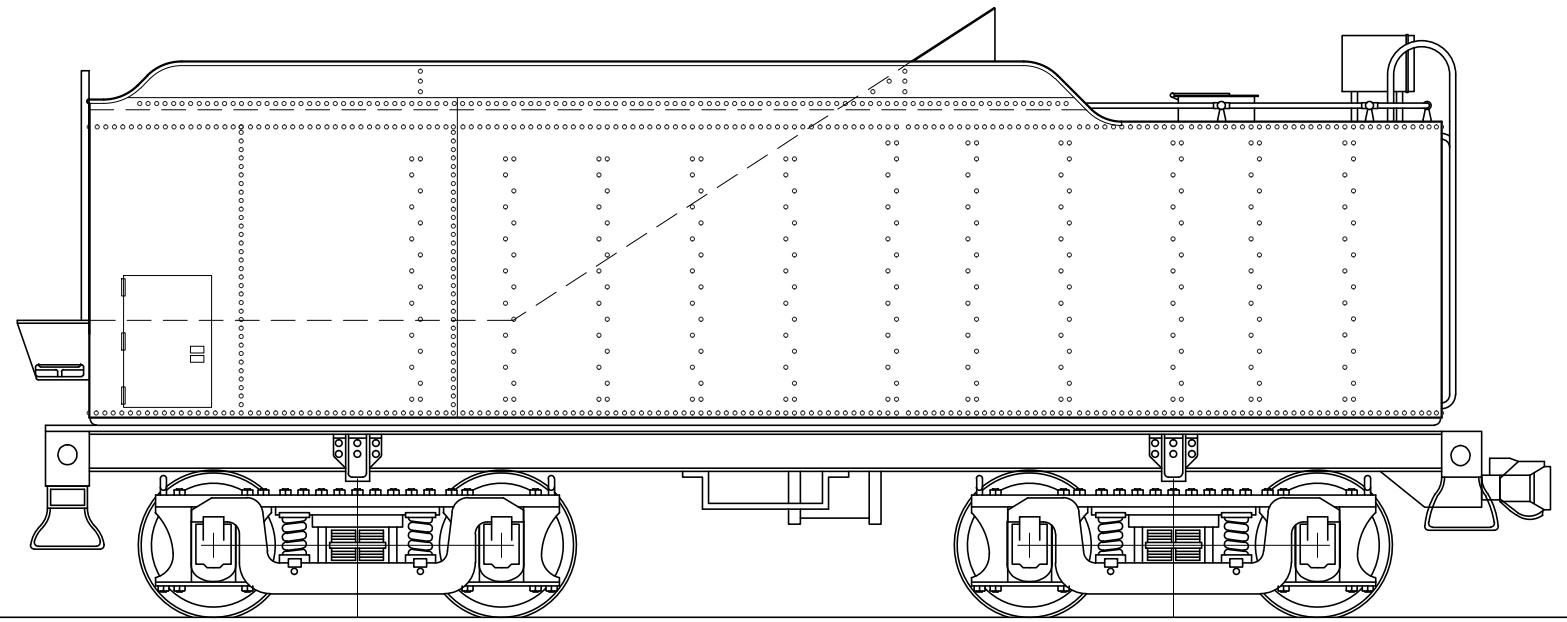


SECTION B-B



SECTION A-A



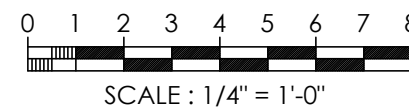
Note: Some details and documentation not shown pending further research and investigation.

B	3-11-16	Addition Details Added
A	2-11-16	Preliminary Issue

This Drawing represents a documentation of the existing Tender for Maine Central 4-6-2 No. 470 Built June 1924 by American Locomotive Works

The original 8,000 gallon tender tank which was delivered with the 470 was replaced in 1927 with a 10,000 gallon tank built by the Ralo Supply Company

It wasn't until 1945 that the Stoker was added to the 470 resulting in altering the tender tank to accomodate the Standard HT Stoker Unit. Water capacity adjusted to 9200 gallons. Coal capacity from 14 tons to 13 tons.



Drawn by: Keith Muldowney  
February 2016

Maine Central Railroad - Pacific No. 470

Tender

New England Steam Corporation  
P.O. Box 302  
Winterport, ME 04496

Print No.  
T-1