

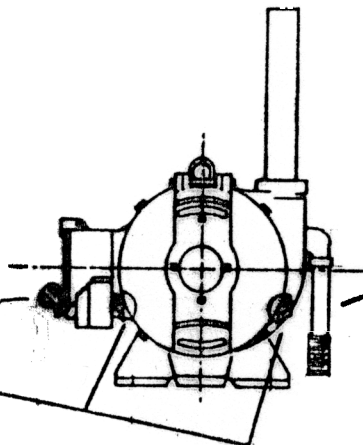
F R A G I L E

H A N D L E W I T H C A R E !

DO NOT ATTEMPT TO

UNSCREW THESE THUMBSCREWS.

THEY ARE DUMMY PARTS FOR  
APPEARANCE ONLY AND ARE  
TO PROPER SCALE AND VERY  
DELICATE.



THIS STEAMPIPE IS MODELLED  
TO SCALE.

- IT IS SILVER SOLDERED TO  
TURBINE BODY AND CANNOT BE  
MOVED FROM ITS PRESENT,  
PERMANENT LOCATION.

- USE THIS STEAM INLET PIPE  
JUST AS IT IS, WITHOUT ANY  
ALTERATION OR MODIFICATION  
WHATSOEVER.

Turbogenerator 1" Scale  
F. L. Moseley  
Flintridge, CA  
10/83